

School Self Evaluation: September 2022 – June 2026

Update: June 2023 – January 2024

June 2023 – Step 2 Gathering Evidence

Evidence was gathered from 3 separate focus groups – parents, pupils and staff. It was decided that the most effective way to gather evidence was in small discussion groups rather than questionnaires.

As the focus identified for SSE is Key Area 1 Culture and Environment the questions asked of the focus groups centred around 5 main areas:

- Effective use of accommodation
- General ethos
- Support
- Partnerships
- Other – Healthy Eating

January 2024 – Step 3 Analyse Data and Make Judgements

Core Wellbeing group met on 22.01.24 and analysed the results of the focus group discussions.

On analysing the results and aligning them to the Wellbeing Statements of Effective Practice it was very clear that all groups felt that the following statements needed addressing:

1.

“The physical environment is modified to meet the needs of children and young people with additional and/or complex needs. The following are available if applicable:

- Sensory room/sensory gardens
- ‘Safe’ room/space for distressed/anxious children and young people
- Room(s) for meeting with parents, visiting professionals
- Room(s) for individuals and small groups requiring targeted intervention and support •
- Lifting equipment
- Specialist technology
- Buddy bench
- Nurture Room

***This list is not exhaustive**

2.

“The School recognises that wellbeing is as important for the staff as for the children and the young people. Appropriate supports are available for staff wellbeing.”

“Wellbeing Policy Statement and Framework for Practice 2018 – 2023”

Discussion led to the following targets being agreed:

Target 1

- **To modify the school environment to support pupils who present with sensory needs**

Actions

- **Audit of pupil needs**
- **Research sensory interventions to include sensory materials, sensory walls, sensory play areas, sensory room**
- **Staff training on appropriate use of sensory space/materials**
- **Research costing and funding options**

Target 2

- **To provide more support for parents and staff**

Actions

- **Facilitate parents to meet each other**
- **Facilitate staff to meet in class groupings during school time**
- **Provide opportunities for staff to debrief after incidents**

March 2024 – Staff Meeting of 13th March

All staff present were updated on the SSE process to date. Results of findings from focus groups were shared with staff.

An infographic detailing the chosen key area was shared with staff. Copies were distributed for displaying in classrooms and other significant areas throughout the school.

The above targets and actions were proposed to staff and were agreed to by everyone present.

School Self Evaluation – Wellbeing Promotion

- The staff of St Michael's School have initiated a wellbeing promotion review in line with DE Circular 0056/2022
- Following a review of the Four key Areas of Wellbeing it was agreed that the focus for SSE would be [Key Area 1 – Culture and Environment](#)
- The following Targets and Actions were agreed at a Staff Meeting of 14th March 2024:

Target 1

To modify the school environment to support pupils who present with sensory needs

Actions

- Audit of pupil needs
- Research sensory interventions to include sensory materials, sensory walls, sensory play areas, sensory room
- Staff training on appropriate use of sensory space/materials
- Research costing and funding options

Target 2

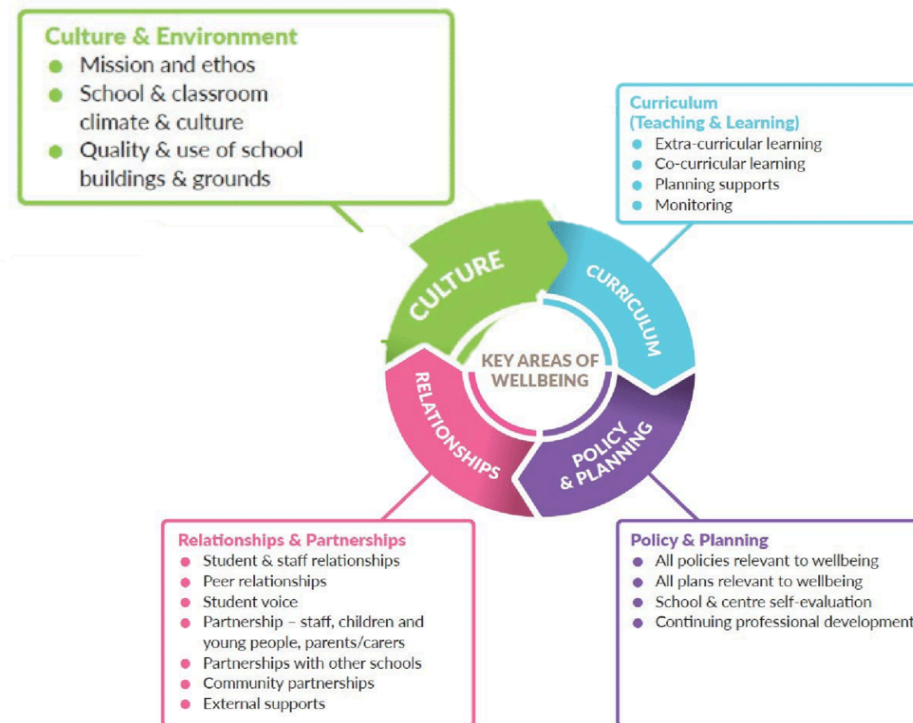
To provide more support for parents and staff

Actions

- Facilitate parents to meet each other
- Facilitate staff to meet in class groupings during school time
- Provide opportunities for staff to debrief after incidents

School Self Evaluation – Wellbeing Promotion

- The staff of St Michael's School have initiated a wellbeing promotion review in line with DE Circular 0056/2022
- They have looked at the Four Key Areas of Wellbeing as shown below and have agreed that the focus for SSE will be **Key Area 1 – Culture and Environment**
- The School Self Evaluation process will be used to review and improve this key area



Deputy Principal's Office